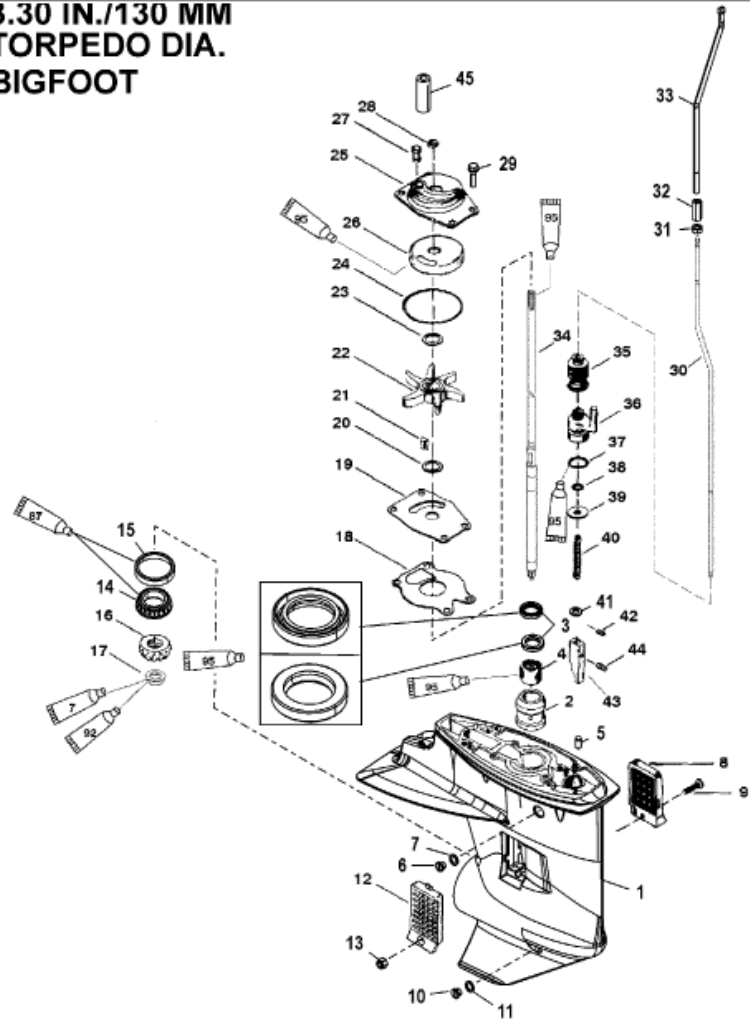


**3.30 IN./130 MM  
 TORPEDO DIA.  
 BIGFOOT**



2491

Parts List						
Ref	Class	Part	Description	Qty	Comment	Footnote
-	1665	8669T33	GEAR HOUSING ASSEMBLY, Con	1	(Long - Black)	
-	1665	8669A46	GEAR HOUSING ASSEMBLY, Con	1	(X-Long - Black)	
1	1665	8669A21	GEAR HOUSING ASSEMBLY, B.	1	(Basic - Black)	
2		NSS	NOT SOLD SEPARATE, Sleeve	1		
3	26	99325	SEAL	2		15
4	31	41326	ROLLER BEARING	1		
5	17	85500	PIN, Dowel (.187 x .530)	2		
6	10	799530 2	SCREW KIT, (.375-16 x .250) C	1		
7	12	19183 3	SEAL	1		15,18
8	35	41133	SCREEN, Water Inlet Port	1		
9	10	4003112	SCREW, (M5 x 40)	1		
10	10	799530 2	SCREW KIT, (.375-16 x .250) C	1		
10	22	67892A 1	FITTING KIT, Plug Fill/Drain	1	SN# USA-0T979999/BEL-0P3254	
10	22	67892A05	PLUG KIT, Drain (Magnetic)	1	SN# USA-0T980000/BEL-0P3254	
11	12	19183 3	SEAL	1		15,18
12	35	41134	SCREEN	1		
13	11	40136 5	NUT, (M5)	1		
14	31	98294A 1	ROLLER BEARING ASSEMBLY	1		
15		NSS	NOT SOLD SEPARATE, Cup	1		
16	43	854498	PINION GEAR, (12-29)	1		
17	11	828490	NUT	1		
18	27	99326 1	GASKET	1		15,18
19		85083	FACE PLATE	1		18
20	12	86645 1	WASHER	1		15,18
21	28	85119	KEY	1		18
22	47	85089 10	IMPELLER	1		18
23	12	86645 1	WASHER	1		15,18
24	25	69202	O-RING	1		15,18
25	46	99157A 1	WATER PUMP ASSEMBLY	1	SN# USA-0T800999/BEL-0P2679	18
25	46	99157A02	WATER PUMP ASSEMBLY	1	SN# USA-0T801000/BEL-0P2680	18
26		NSS	NOT SOLD SEPARATE, Insert	1		18
27	26	85090	SEAL	1	SN# USA-0T979999/BEL-0P3254	15,18
27	26	85090001	SEAL	1	SN# USA-0T980000/BEL-0P3254	15,18
28	25	86203	RING	1		15,18
29	10	824832 4	SCREW, (M6 x 16)	4		
30		854503	SHIFT SHAFT	1	(Long)	
30		854504	SHIFT SHAFT	1	(X-Long)	
31	11	40021 2	NUT, (M6)	1		
32		822419	COUPLER	1		
33		852994 1	SHIFT SHAFT, Upper	1		
34	45	854501	DRIVE SHAFT	1	(Long)	